



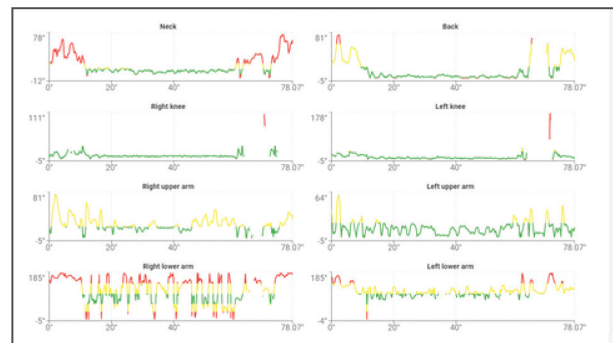
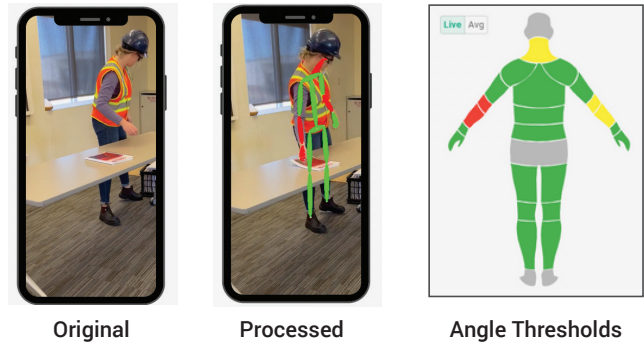
A simple way to understand and evaluate worksite risk.

PoseChecker is a vision-based motion capture software that offers a comprehensive analysis of workplace ergonomics. Developed by EWI Works, a trusted leader in ergonomic solutions for over 30 years, PoseChecker equips you with the tools and insights needed to proactively address musculoskeletal disorders (MSD's) and create a safer, healthier work environment.

With PoseChecker you can use any smartphone to capture video, no special set-up or editing required. The web-based platform offers visualizations to track and evaluate risks without needing sensors or equipment. The video application ensures transparency in how results can be seen and interpreted while Posechecker's real-time analysis ensures output is reliable and valid.

Key Features

- Multi-subject analysis and automated review of postural exposures.
- Access to integrated assessment tools such as REBA and liberty mutual manual handling assessments.
- Side-by-side comparison of analyzed videos to test solutions or different work methods.
- Access to ongoing product updates and new features.
- One hour PoseChecker training.
- 24 hour email customer support Monday – Friday.



Compare Body Parts Chart



Overall Chart



For more information on PoseChecker

call us at 780.436.0024 or email us at info@ewiworks.com

